

**OPENS
FREE TO
ALL TRADE
VISITORS**

**inter
airport**
south east asia

The world's premier airport exhibition

**ASIA'S PREMIER INTERNATIONAL EXHIBITION
FOR AIRPORT EQUIPMENT, TECHNOLOGY,
DESIGN AND SERVICES**

EVENT PREVIEW

Join the Airport Gamechangers



1 - 3 MARCH 2023 | MARINA BAY SANDS, SINGAPORE

#IASEA 2023



@interairportsea



@interairportsoutheastasia

www.interairport-southeastasia.com

While every effort has been made to ensure that the content in this Event Preview is correct,
the organiser is not liable for errors that may occur.

REGISTER NOW



Built by



In the business of
building businesses

Supported by



SINGAPORE EXHIBITION
& CONVENTION BUREAU

Held in



Singapore
Passion Made Possible



THE EVENT

IASEA is the premier international airport event in Asia connecting some of world's most prominent airport solution providers to connect with Asia's airport and airline professionals, regulatory bodies, aviation authorities and all other airport-related airport industry leaders.

This is where forward thinking companies and individuals in the airport industry come together to buy, sell and network in Asia.

GET INSPIRED. MAKE CONNECTIONS. CONTINUE THE CONVERSATION

IASEA 2023 AT A GLANCE

7th

EDITION

1-3

MARCH 2023

150

EXHIBITORS

14

CONFERENCE
SESSIONS*

3

OFFICIAL PAVILIONS
GERMANY, ITALY, SINGAPORE

4000

ATTENDEES*

12

PRODUCT
PRESENTATIONS

FREE

CONFERENCE
ADMISSION

*estimated



**REGISTER BEFORE 24 FEB
TO WIN AN IPHONE 14**

terms & conditions apply

Register at www.interairport-southeastasia.com



Discover the latest airport solutions - all under one roof

Terminal Construction . Terminal Installations . Architectural & Interior Design . Furniture, fittings and accessories . Floor and wall furnishings . Fabrics, textures and other materials . Terminal Operations . Signage and guidance systems . Passenger Information Technology . Security Equipment . Baggage Handling . Cargo Handling . Passenger Handling . Health & Safety . Terminal Facilities . Airport Parking . Shopping, retail & duty free . Catering Outlets . Lounges, smoking areas, play area . Data Management Systems and Solutions . Data centre and server technology . Cloud Services . Hybrid IT Solutions . Data Exchange Solutions . Artificial Intelligence . Infrastructure and Terminal Management . Building Control . Common User Terminal Equipment (CUTE) . Communication Systems . Control Room Management . Passenger Management . Electronic Ticketing . Automated Passenger Flow . Seamless Travel Apps . End-to-end Baggage Tracking . Operations Management . Ground Operations Management . Ground Traffic Management . Maintenance Management . Planning, simulation and testing . Air Traffic Management . Air Traffic Control . Flight Monitoring Systems . Drone Detection Systems . Business Management Service and Solutions . Airfield Construction . Planning and Consultancy . Apron and pavement design and construction . Hangar design and construction . Perimeter Fencing . Technical Installations . Technical Systems and Services (airside) . Airfield Lighting . Navigation Aids . Electric Charging Points . Environmental Impact Management . Pavement Servicing . Ground Support Equipment and Services . Aircraft Handling . Aircraft docking and passenger boarding bridges . Baggage Handling (airside) . Cargo Handling (airside) . Passenger Handling (airside) . Airfield Service Equipment . Aircraft Maintenance . Fleet Management . Management and Industry Services

SHOW INFORMATION

Opening Hours

Wed, 1 Mar 10am - 5pm
Thu, 2 Mar 10am - 5pm
Fri, 3 Mar 10am - 3pm

Registration Hours

Wed, 1 Mar 9.30am – 4.30pm
Thu, 2 Mar 9.30am – 4.30pm
Fri, 3 Mar 9.30am – 2.30pm

**Venue: Sands Expo & Convention Centre, Marina Bay Sands,
Singapore, Level 1, Hall C**

Admission:

All trade professionals attend IASEA 2023 exhibition & conference for FREE
No admission for persons below 18 years old or those who are deemed to be inappropriately dressed



Singapore

Where passion and possibilities meet

Discover Singapore, a city-state in Southeast Asia that is a fast becoming one of the world's hottest destinations - drawing both business and leisure travellers.

Its efficient infrastructure, lush streetscapes, and ever-evolving vistas are testament to this energetic cosmopolitan city's ability to turn possibilities into reality.

Take the time and you'd notice neighborhoods as diverse as the locals that inhabit them. Cultures, nature, food, architecture - whatever you're passionate about, the options are endless.

Visit www.visitsingapore.com for more

REGISTER NOW



Built by



In the business of
building businesses

Supported by



Held in



CONFERENCE AT A GLANCE

ALL INDUSTRY PROFESSIONALS ATTEND IASEA CONFERENCE FOR FREE

WELCOME!

IASEA's Conference 2023 will offer an overall outlook of the APAC aviation industry, addressing necessary challenges, underlining opportunities, and revealing exclusive statistics/data/trends by leading analysts and consultants, to ultimately allow strategic, sustainable reassessments & safeguards, as industry landscapes evolve.

SPEAKER HIGHLIGHTS



ADP International
Jean Roche
Head of International
Engineering Services



**Airports of Thailand
PLC**
Latchida Apaphant
Executive Vice President
(Corporate Strategy)



**Beijing Daxing
International Airport**
Ma Yin
Vice President



**Changi Airports
International**
Ng Kuan Luen
Director, Ventures



Cirium
Piyush Chawla
Managing Director
APAC



Malaysia Airlines
**Mohd Nadziruddin
Mohd Basri**
Chief Executive Officer,
Aviation Services (AVS)



**Noida International
Airport**
Anurag Shandilya
Head of Operations

DAY 1 WEDNESDAY, 1 MARCH

- Global Perspective
- Exclusive - An Asia Pacific Outlook Trends and forecasts of the APAC industry based on exclusive statistics and analysis
- In conversation
- Recovering from the Pandemic: Opportunities within the airport ecosystem as traffic in APAC returns & growth resumes
- Future Terminals: What will it look like & what are the opportunities for suppliers?
- The Technology Advantage: Identifying and implementing suitable technology to improve airport sustainability
- Rising Southeast Asia: Airports with Big Ambitions

DAY 2 THURSDAY, 2 MARCH

- Exclusive Report – Data analytics at the heart of airport planning
- Transforming the Passenger Experience: At the forefront of innovation
- Kansai International Airport (KIX): Revamping to meet the needs of inbound tourism
- Back to Basics: Getting Ahead of the Surge
- Spotlight on the Environment: Sustainability, carbon net zero & eco-airports
- Spotlight on India: Massive airport development underway
- Spotlight on China: A game changer in aviation

DAY 3 FRIDAY, 3 MARCH

- The Big List Updated: Airport Projects & Related Opportunities Across Asia Pacific + Q&A & Inter Airport 2023 Wrap-Up

**subject to change*

LIST OF PARTICIPATING COMPANIES

COMPANY NAME	COUNTRY / REGION	BOOTH NO	COMPANY NAME	COUNTRY / REGION	BOOTH NO
ACE SOLUTIONS 87 CO LTD	THAILAND	C27	GROUPE ADP (GROUPE ADP AIRPORT SERVICES)	HONG KONG	E15
ACTEUS FUELLING PTE LTD	SINGAPORE	F13		SPAIN	F43
ADB SAFEGATE	MALAYSIA	D01	GUINAULT SA	FRANCE	B02
ADVEEZ	FRANCE	A29	HANDLING EQUIPMENT ENGINEERING SDN BHD	MALAYSIA	A07
AIR TECH ITALY	ITALY	F21	HANEFLEX	SINGAPORE	B05B
AIRSAFE AIRPORT EQUIPMENT CO. LTD	CHINA	A01	HANSACONSULT INGENIEURGESELLSCHAFT MBH	GERMANY	E19A
ALNIFF INDUSTRIES PTE LTD.	SINGAPORE	F38	HARDELEC ENGINEERING (S) PTE LTD (JEMBO CABLE)	INDONESIA	D21
ALS LOGISTIC SOLUTIONS	GERMANY	B02	HAURATON SINGAPORE PTE. LTD.	SINGAPORE	E19B
ALSTEF GROUP	FRANCE	C31	HOFMANN GMBH	GERMANY	AA02
ALUMASC WATER MANAGEMENT SOLUTIONS	UNITED KINGDOM	B03	HONEYWELL	UNITED STATES	B01
AVIACO GSE	BELGIUM	C29	HUBEI DONGHAN AIRPORT EQUIPMENT TECHNOLOGY	CHINA	B04
AVIATION & ELECTRICAL TRADING	SINGAPORE	E11	IFM ELECTRONIC PTE LTD	SINGAPORE	F16
AVIONICS AIRFIELD LIGHTING PTY LTDA	USTRALIA	D21	IFWEXPO HEIDELBERG	GERMANY	D28A
AVIRAMP	UNITED KINGDOM	AA01	INNOVENCE AIRPORT SYSTEMS GMBH	GERMANY	E30A
AVLITE SYSTEMS & FLASH TECHNOLOGY (SPX ATON)	UNITED STATES	B16	INTERROLL ASIA PTE LTD	SINGAPORE	B17
BILDAL ELECTRICALS PVT LTD	INDIA	F42	ITW GSE	DENMARK	E01
BLAST DEFLECTORS, INC.	UNITED STATES	C12	JBT AEROTECH	SINGAPORE	C02
BLISS-FOX BY PANUS	THAILAND	D07	KALMAR MOTOR	SWEDEN	D43
BO-GLASS INDUSTRIAL LIMITED	CHINA	G26	KALPAR ENGINEERS PVT. LTD.	INDIA	E07
CEIA SPA	ITALY	A13	KEYVAN AVIATION	TURKEY	D45
CHARLATTE MANUTENTION	FRANCE	AA10	KUSCH+CO	GERMANY	E20A
CIMC AIR MARREL SAS	FRANCE	C22	LIQUID CONTROLS	UNITED STATES	AA07
CLA-VAL FUELING	UNITED STATES	F13	LIQUIP INTERNATIONAL PTY LTDA	USTRALIA	G32
COBUS INDUSTRIES	GERMANY	E30C	LUXSOLAR	ITALY	F21
COGNITEC SYSTEMS	GERMANY	D27D	MARECHAL ELECTRIC ASIA	SINGAPORE	B02
COLIBRI ENERGY GMBH	GERMANY	D27A	MOTION06 GMBH	AUSTRIA	D27C
CU PHOSCO LIGHTING	UNITED KINGDOM	E09	MOTOTOK	GERMANY	E29A
CW AERO SERVICES PTE LTD	SINGAPORE	B02	MUSCO LIGHTING	UNITED STATES	F37
D.S. BROWN	UNITED STATES	D20A	NERAK F RDE RTECHNIK	GERMANY	D27E
DABICO AIRPORT SOLUTIONS	UNITED ARAB EMIRATES	D46	NIMROD ENGINEERING	SINGAPORE	B15
DOLL AIRPORT EQUIPMENT GMBH	GERMANY	D28D	NORD DRIVESYSTEMS - GETRIEBEBAU NORD GMBH & CO. KG	GERMANY	E20B
DYNELL GMBH	AUSTRIA	G16	NUCTECH SINGAPORE PTE LTD	SINGAPORE	A05
EATON CARTER GROUND FUELING	UNITED STATES	B05B	OCEM AIRFIELD	ITALY	C16
EFLA OY	FINLAND	E08	ONE WORKS	ITALY	F21
ELAFLEX HOSES	GERMANY	B05B	OUTSIGHT	FRANCE	E12
ELECTROAIR	ESTONIA	B12	PAGE GSE	UNITED STATES	G28
EMCEE ELECTRONICS	UNITED STATES	B05B	PARKER VELCON FILTERS	UNITED STATES	B05B
EWO GMBH	ITALY	F21	PERFECT AIRPORT SOLUTIONS PTE LTD	SINGAPORE	AA05
FAME SOFTWARE	GERMANY	D28B	POWER STOW	DENMARK	D20
FAUDI AVIATION	GERMANY	F13	PT HASTA	INDONESIA	B16
FEDERAL MINISTRY FOR ECONOMIC AFFAIRS AND ENERGY	GERMANY	GERMAN PAVILION	PT PANJI	INDONESIA	G32
FINESCO ENGINEERING PTE LTD	SINGAPORE	B03	PTERIS GLOBAL LIMITED	SINGAPORE	C22
FLEXCO	SINGAPORE	A11	RAPISCAN SYSTEMS	SINGAPORE	B15
GAMMON TECHNICAL PRODUCTS	UNITED STATES	B05B	REFUEL INTERNATIONAL	AUSTRALIA	G38
GATE	GERMANY	GERMAN PAVILION	S&E CORPORATION	SINGAPORE	A31
GEMONE	AUSTRALIA	G30	SAGE PARTS ASIA LTD.	HONG KONG	G36
GOLDHOFER	GERMANY	B02	SAINT-GOBAIN WEBER	UNITED KINGDOM	E11
			SAMUDRA ENGINEERING SOLUTIONS	MALAYSIA	G32

*subject to change

COMPANY NAME	COUNTRY / REGION	BOOTH NO
SANXING PRIVATE LIMITED	SINGAPORE	B06
SCHREDER SINGAPORE PTE LTD	SINGAPORE	A19
SEALTECH.COM AVIATION SEALS MFG. LTD.	HONG KONG	A25
SG SOLUTIONS	SINGAPORE	B16
SHENZHEN ANSLA TECHNOLOGY CO., LTD	CHINA	D19A
SHENZHEN CIMC TIANDA AIRPORT SUPPORT LTD	CHINA	C22
SICHUAN CAMY NEW ENERGY CO., LTD.	CHINA	B06B
SICK	GERMANY	D28C
SISTEMATİK	TURKEY	D19
SIYUANS AVIATION	CHINA	B29
SMETS TECHNOLOGY GMBH	GERMANY	E30B
SOFTECH	ITALY	F21
SOUTHWEST MICROWAVE INC	UNITED STATES	C04
SOVAM	FRANCE	F17
STERIL-KONI	NETHERLANDS	F38
STI SECURITY TRAINING INTERNATIONAL GMBH	GERMANY	E29C
STUMPE GLAS GMBH	GERMANY	E29B
SUGIE SEITO CO., LTD.	JAPAN	B23
SURVITEC	SINGAPORE	C12
TAILOR MADE SYSTEMS LIMITED	UNITED KINGDOM	AA05
TCR GROUP	BELGIUM	D40
TDA LEFEBURE	FRANCE	C10
TET ESTELAS	ESTONIA	F46
TIMSAN	TURKEY	A07
TIPS GSE	SLOVENIA	G16
TKH AIRPORT SOLUTIONS	NETHERLANDS	G20
TKH SECURITY & AIRPORT SOLUTIONS ASIA PTE LTD	SINGAPORE	G20
TLD ASIA	SINGAPORE	C20
TOTAL CONTROL SYSTEMS	UNITED STATES	B18
TOWFLEX GMBH	GERMANY	B06
TRAFFIC-LINES GMBH	GERMANY	D28E
TRANSOFT SOLUTIONS	AUSTRALIA	A39
TRANPO INC	UNITED STATES	B03
TREPEL	GERMANY	E30C
TRILO SMART INDUSTRIES	NETHERLANDS	F41
T-SYSTEMS INDONESIA	INDONESIA	D27B
T-SYSTEMS INTERNATIONAL GMBH	GERMANY	D27B
T-SYSTEMS SINGAPORE LTD.	SINGAPORE	D27B
UBIZENSE LIMITED	HONG KONG	AA03
UCAST PTE LTD	SINGAPORE	C05
VALIS ENGINEERING	PORTUGAL	A31
VESTERGAARD COMPANY A/S	DENMARK	D43
VOLKAN FIRE FIGHTING VEHICLES	TURKEY	A41
WEIHAI GUANGTAI AIRPORT EQUIPMENT CO., LTD.	CHINA	F02
YOUYANG AIRPORT LIGHTING EQUIPMENT INC	SOUTH KOREA	B07
ZEL- AAREN INNOVATION	SWEDEN	B31
ZHEJIANG GOODSSENSE FORKLIFT CO., LTD	CHINA	B21

REGISTER FOR YOUR FREE VISITOR PASS TODAY

<https://www.interairport-southeastasia.com>



Register before 24 Feb to win an
IPHONE 14!

*terms & conditions apply



REGISTER NOW TO WIN

*subject to change



6 pillars of ADB SAFEGATE

ADB SAFEGATE

ADB SAFEGATE is a leading provider of intelligent solutions that deliver superior airport performance from approach to departure. The company partners with airports and airlines to analyze their current setup and operations, identify bottlenecks, and jointly solve them using a consultative approach that enables airports to improve efficiency, enhance safety and environmental sustainability, and reduce operational costs. The integrated portfolio includes solutions and services that harmonize airport performance, tackling every aspect of traffic handling and guidance, from approach, runway and taxiway lighting, to tower-based traffic control systems, and intelligent gate and docking automation.

Booth: D01

FAMA

ADVEEZ

FAMA (Fleet Asset Management for Airports) is a global connected solution dedicated to powered assets fleet management. Our in-house engineered solution includes robust and reliable hardware modules with customized Localeez® web platform to optimize ground support operations and safety. ADVEEZ data capture box collects real time technical data such as geolocalization, embedded geofence, access control, in-use, e-stop, moving, working, idle, energy level, driver behaviors status, etc...

Booth: A29



BAGXONE Baggage Handling AGV

Alstef Group

BAGXONE is a high-speed AGV (Automated Guided Vehicle) designed to handle individual bags. Our AGVs can cover short distances (i.e. check-in to screening machines or from the screening machines to an Early Bag Store (EBS), reconciliation room, make-up carousel) or long distances (i.e. link between two terminals) and are easily adaptable to suit scalability and redundancy requirements. If there are increased capacity requirements or expansion of the baggage sorting system, new AGVs can be added to extend the fleet.

Booth: C31



Refurbished ground support equipment - all types

Aviaco GSE

Aviaco GSE your specialist in Ground Support Equipment (GSE). We are experts who offer you every GSE service you need to keep your airport running smoothly. We will be happy to answer all your GSE queries about sales, purchase, and rental. Also, we will introduce you to our latest developments to make your GSE sustainable and emission free.

Booth: C29



AV-PAPI Series 3 LED

Avlite Systems & Flash Technology (SPX AtoN)

Our Series 3 PAPI meets both FAA and ICAO requirements in the same compact, lightweight version. Patented LED optics achieve lowest power consumption, highest intensity, and sharpest red/white transition line.

Booth: B16



**REGISTER FOR YOUR FREE
VISITOR PASS TODAY**

<https://www.interairport-southeastasia.com>



BO-001

BO-Glass Industrial Limited

Borosilicate or B270 glass prism for airport taxiway light

Booth: G26

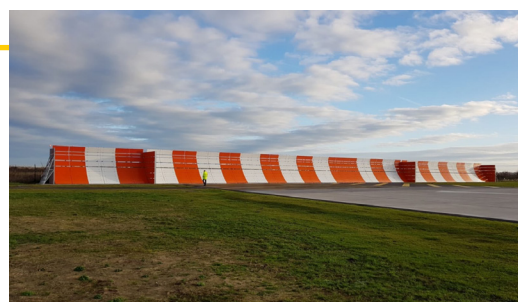


EMA-4

CEIA SPA

MULTI-SENSOR LIQUID EXPLOSIVE DETECTION
SYSTEMS (LEDS)

Booth: A13



Jet Blast Deflector

Blast Deflectors, Inc.

BDI deflectors are constructed of heavy-duty, hot-dip galvanized steel. All designs are modular and can easily be relocated or reconfigured as requirements change. The most common type of jet blast deflector is BDI's curved design, which has been the industry standard since 1957, although BDI offers many other shapes and configurations to meet the requirements of our customers.

Booth: C12

**REGISTER FOR YOUR FREE
VISITOR PASS TODAY**

<https://www.interairport-southeastasia.com>



ELECTRIC TRACTOR T135 EVO

CHARLATTE MANUTENTION

Handling equipment for industrial and airport use

Booth: AA10



FL820

CU Phosco Lighting

FL820 LED FLOODLIGHTING SYSTEM provides an innovative solution for Area Lighting. The FL820 is a high output LED floodlight, which is designed for all types of area lighting, and may be used as a replacement for existing 1kW or 2kW floodlight systems. It is available as a single, twin or triple module with CSP (Chip Scale Package) LEDs.

Booth: E09

DEM 045-090

Dynell GmbH

Dynell's all-new electric ground power units feature the latest lithium battery technology. The DEM is suitable for any aircraft in the world and impresses as a carbon-neutral, battery-powered GPU application.

Booth: G16



KDL1 Primary Connector

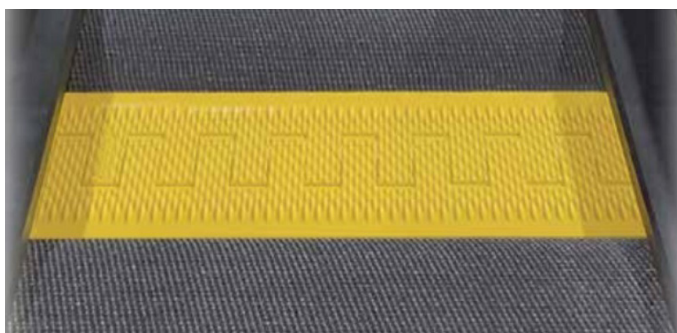
EFLA Oy

KDL is the most robust and fastest-to-install connector in the market. KDL is fitted with unique cable gland, designed for industry experts requirements for easy and reliable use. Highest insulation resistance is provided by three insulation barriers. Screen continuity without crimping minimizes risk for leakages. KDL connector tolerates well bending and one connector fits to all cable diameters. KDL connectors are FAA certified.

Available for screened cables (KDL1) and unscreened cables (KDL10).

Booth: E08





Segmented Transfer Plates

FLEXCO

Segmented Transfer Plates from Flexco can help prevent product loss at the transfer point, preventing potential damage to the product as well as the belt and conveyor structure. Segmented Transfer Plates provide smooth transition from one belt to another, from belt to chute, or from belt to structure.

Booth: A11

German Pavilion

Germany participates with a "German Pavilion" offering a professional brokerage service to help to establish contacts with German companies and comprehensive information on Germany as an important business location.



**REGISTER FOR YOUR FREE
VISITOR PASS TODAY**

<https://www.interairport-southeastasia.com>



Sapphire

GemOne

Sapphire V2S is a premium safety management solution for the material handling industry which has unleashed the potential of tens of thousands of industrial machines across the world.

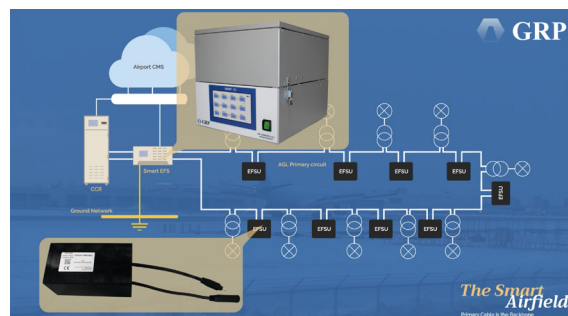
Booth: G30

Earth Fault Search System (EFS-GRP)

GRP

Based on its patented powerline technology, this EFD-GRP is an earth fault and localisation solution. It allows the maintenance team to map and monitor the primary circuit status in all conditions 24/7. It provides accurate information about the location of the fault without having to open any pit or dismantle any inset light.

Booth: F43



Parker Velcon CDF-X Water Barrier Filter

Haneflex

Parker Velcon SAP Free water barrier technology eliminates the uncertainty of SAP migration downstream from Filter Monitors by removing SAP from the equation while still providing the efficiency and water removing performance you can rely on from a fuel monitor cartridge.

Booth: B05B



3D/2D sensor for mobile machines ifm electronic Pte Ltd

Augmented reality: mobile 3D smart camera with overlay function. 3D sensor system with integrated 2D camera and overlay function. Indication of warnings and obstacles in the live view. Signal processing in the sensor, no external process unit required. Easy adjustment via ifm Vision Assistant

Booth: F16



INTERROLL BELT CURVE

INTERROLL ASIA PTE LTD

Whenever reliability, performance and simplicity are called for, the biggest airports worldwide rely on Interroll Belt Curve. Proven in more than 100,000 installations throughout the world.

- High reliability
- Robust construction
- Positive chain drive technology
- No belt slippage
- No belt tensioning
- Lowest maintenance needs
- Quick belt replacement
- Worldwide availability

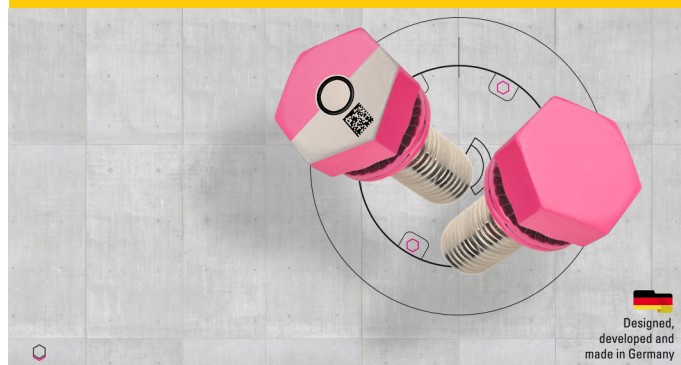
Booth: B17



MagentaLock - AGL Safety Screw Innovence Airport Systems GmbH

MagentaLock introduces the Airfield Ground Lighting Safety Screw. The AGL safety screw comes as one piece, in a non-losable connection of pre-assembled safety washer and the pink screw. Since the cam angle at the washer is greater than the thread pitch of the screw a wedge effect is created by the cams, achieving a high preload force which even gets higher before loosening. <http://magentalock.com/>

Booth: E30A



Designed,
developed and
made in Germany

ITW GSE 7400

ITW GSE

The battery-powered ITW GSE 7400 eGPU is ideal for gates and hangars with no fixed 400 hz installations. This battery powered ground power unit is a game changer in the ongoing quest for lowering emissions. As the ITW GSE 7400 eGPU reduces CO2 by 90 % and NOx emissions by 95%, the eGPU is the right choice for airports wishing to reduce their carbon footprint and to improve the working environment for the operators.

Booth: E01



JBT LEKTRO Model AP8850SDA

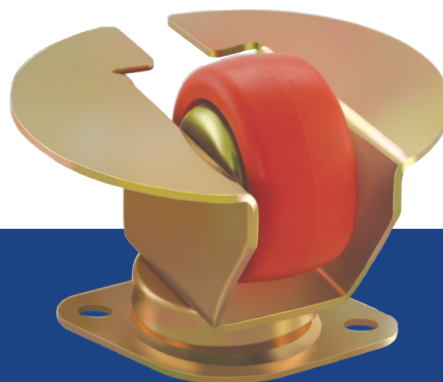
JBT AeroTech

JBT LEKTRO Model AP8850SDA

Booth: C02

**REGISTER FOR YOUR FREE
VISITOR PASS TODAY**

<https://www.interairport-southeastasia.com>



AIR CARGO CASTORS

KALPAR ENGINEERS PVT. LTD.

Castor wheels suitable for air cargo handling

Booth: E07



AERONAUTICAL & NAVIGATION DATABASE

KEYVAN AVIATION

KEYVAN is one of the four EASA-approved companies providing aeronautical & navigation database solutions used in FMS, flight planning, route analyses systems, aircraft & helicopter EFB systems. KEYVAN offer Aeronautical and navigation database solution with worldwide data coverage, the database included with more than 27,000 airports, more than 35,000 Runways including with Civil, Private and Military category, globally, and millions row of data included with airways, navaids, waypoints and procedures related to airports, restrictive and prohibited zones, and etc.

Booth: D45



V-Travel 8300

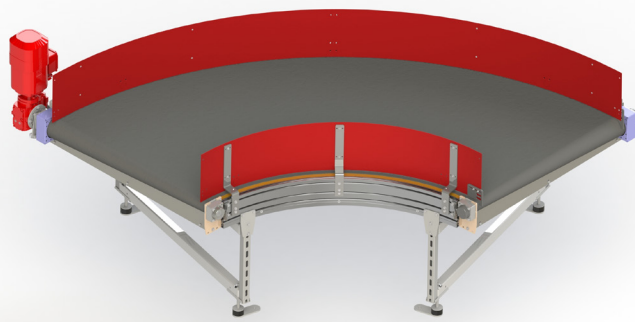
Kusch+Co

The series V-Travel is designed by Justus Kolberg: a comprehensive, customizable and varied series of benches and loungers geared towards the public waiting areas in international airports, cruise centres and railway stations.

The V-Travel benches won the German Design Award in 2018.

The product line contain as well the seat islands, in round, oval, square or rectangular shape.

Booth: E20A



Curve Belt Conveyors - CBC120

motion06 gmbh

With a conveying speed of up to 3.0 m/s, flexibility and hardness is also demanded of the bends. The area of application for the m06 »CBC 120« belt bend is in the continuous or clocked transportation of pieces of luggage and packages with changes in direction. When developing the belt bend, highest priority was given to the lowest space requirements, a wide range of standard measurements or customer-specific measurements for integration into new or existing systems.

Booth: D27C



LCR.iQ

LIQUID CONTROLS

The LCR.iQ® is the most advanced, configurable, and expandable fueling register ever produced. LC engineers designed the LCR.iQ® from the user's perspective, resulting in a configurable interface that guides the operator through every fueling event to maximize fueling safety and productivity and minimize risk of error.

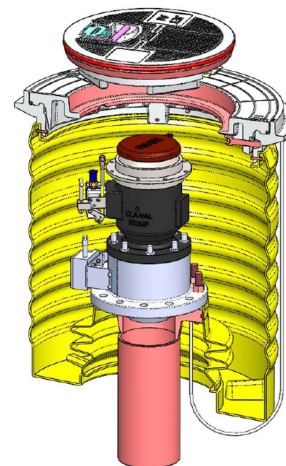
Booth: AA07

Liquip Hydrant Pits - HPA250

Liquip International Pty Ltd

Liquip's HPA series Polyflex hydrant pits are up to one quarter the weight of conventional pits and provide a non-conductive, seamless, advanced-sealing hydrant pit solution. The Liquip Polyflex Hydrant Pit is the lightest pit/lid combination in the world for aviation fuel hydrant systems. Hydrant pits comes complete with a lightweight lid which offers easy maintenance.

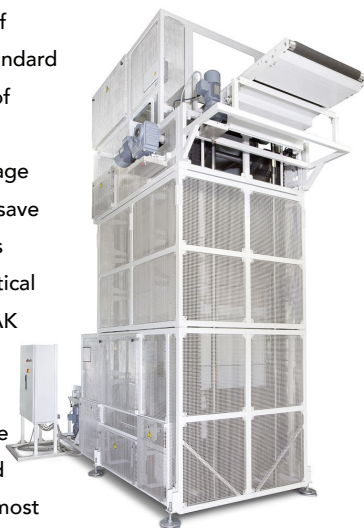
Booth: G32



Continuous Vertical Baggage Conveyor

NERAK Fördertechnik

Continuous Vertical Conveyor (CVC) for vertical transport of loose baggage or trays in standard and oversize. High capacity of up to 1.500/h on a very small footprint for standard baggage and up to 40 m height. CVC save a lot of valuable space versus any other technology for vertical baggage transport. All NERAK machines operate with the unique NERAK Rubberblock Chain which does not require greasing or re-tensioning and makes the whole machine almost maintenance free.



Booth: D27E

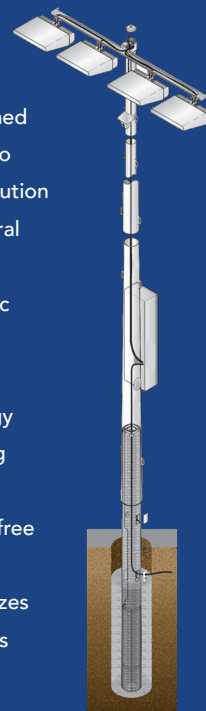
Total Light Control - TLC for LED™ system

Musco Lighting

Light-Structure System™ is designed in 5 Easy Pieces from foundation to poletop to provide a complete solution for lighting, electrical, and structural needs.

- Unique reflector system and optic design provide optimal energy efficiency and light control
- Patented glare control technology keeps light away from neighboring facilities
- Durable system delivers trouble-free operation
- Small structural footprint maximizes the available area around the poles

Booth: F37



LED ELEVATED RUNWAY EDGE AND THRESHOLD/END LIGHT

OCEM Airfield

Ideal for the runway edge and threshold/end lighting on ICAO CAT I, II and III, FAA and military runways, LERE mean lower loads, lower size of CCRs and transformers and thus low life cycle costs. This lightweight and sturdy light fixture has a strong in-built electronic component that is highly resistant to shocks and vibrations and can immediately detect and create an alert in the event of an internal fault.

Booth: C16



Nuctech WooKong H EDS Hold Baggage X-Ray CT Inspection System

Nuctech Singapore Pte Ltd

Based on the state-of-art stationary Computed Tomography (CT) and dual-energy material discrimination technologies, WooKong H has been approved by ECAC EDS Standard 3.1 and is designed for higher standards. Contrabands hidden in the inspected items, such as explosives, liquid explosives, narcotics etc. can be detected automatically. With a high-resolution three-dimensional (3D) image, a two-dimensional (2D) image, and slice images, WooKong H shows the inspected item clearly and helps with image analysis via powerful image processing functions.

Booth: A05

THE MOST ADVANCED MOLDED CONNECTOR EVER!

400Hz GLOBAL SMART CONNECTOR

MOLDED-IN LED LIGHTS | POLYMER INSERTED VOLTAGE SENSOR | SIGNAL VOLTAGE | CURRENT FLOW SENSOR

MULTI-FUNCTION MODULAR MOLDED CONNECTOR with
BUILT-IN THERMAL and BROKEN NEUTRAL SAFETY PROTECTION



PAGE 400Hz Global Smart Connector- P3X

PAGE GSE

The first molded 400Hz GPU connector with internal sensing LED indicators and thermal protection for enhanced Aircraft and operator safety. No modification required for installation on most GPU's and designed to provide years of reliable service.

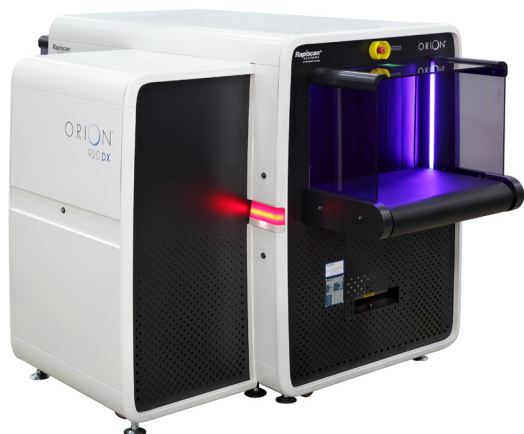
Booth: G28

920DX

Rapiscan Systems

High performance 640mm by 430mm tunnel dual view checkpoint screening system with excellent threat detection alert capabilities.

Booth: B15

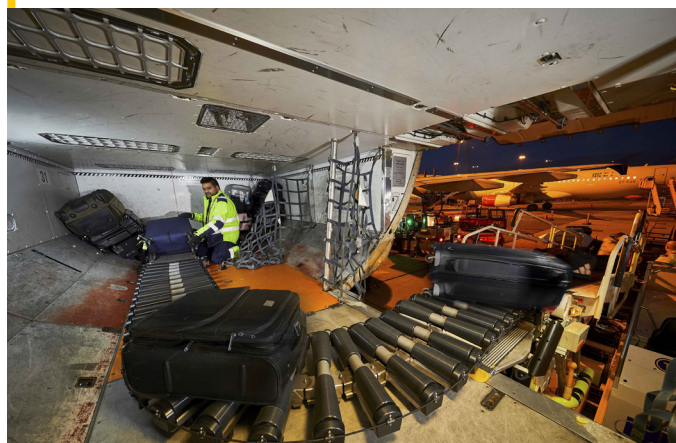


Rollertrack Conveyor

Power Stow

The market's leading belt loader extension provides enhanced working conditions for baggage handlers, improves productivity, and reduces turnaround times. Simple, safe and logical for users, the system has by customer analysis proven to reduce body injuries by more than 50% and provides ground handlers, airports and airlines option for up to 35% faster baggage handling times

Booth: D20



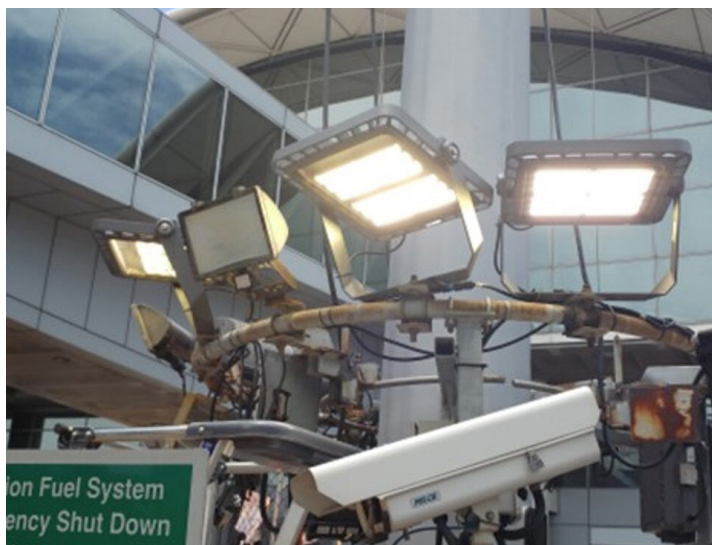
Electric Refueller

Refuel International

Australia's First Fully Electric Aviation Vehicle

Booth: G38





Schreder Omnistar

Schreder Singapore Pte Ltd

Apron Lighting
Booth: A19

**REGISTER FOR YOUR FREE
VISITOR PASS TODAY**

<https://www.interairport-southeastasia.com>



TF5

SANXING PRIVATE LIMITED

With a towing capacity of up to 60 tons, the TowFLEXX TF5 is perfect for Super Midsize Jets, Military Jets, Helicopters (with Tires) and small aircraft. This makes the TF5 an all-rounder used by FBOs, MROs, owners and militaries globally. Our Towbarless Tugs puts safety first and with our unique 360 technology, the tug can move freely without twisting the nose wheel. The NewNPS (Nosewheel Protection System) offers even more safety and comfort during the tow. As the TF5 requires less space to maneuver, hanger space can be optimized to accommodate more aircraft to generate more revenue.

Booth: B06

webertec grout FG

Saint-Gobain Weber

Fast-setting, high strength flowing grout, ideal for:

- Fixing airport lighting units
- Fixing vertical bolts, starter bars and dowels
- Grouting anchor bolts and holding down bolts

Fast-setting with rapid strength gain, allowing loads to be applied within 2 hours at 20°C. Available in standard and rapid grades depending upon temperature.

- Excellent adhesion to concrete and asphalt substrates
- Can be bulked out for varying gap sizes, 5mm - 90mm
- Proven technology with reliability
- Over 30 years experience worldwide

Booth: E11





Passenger boarding bridge

SHENZHEN CIMC TIANDA AIRPORT SUPPORT LTD

Our PBB cover 75 countries and regions around the world, covering 345 airports around the world, and more than 7,500 aerobridges have been supplied or will be delivered; And we have developed the first unmanned intelligent PBB in the world, which is currently operated in stand F9 of Amsterdam Schiphol Airport since Sept 2019.

Booth: C22

Seals (standard parts/non-standard parts)

Sealtech.com Aviation Seals Mfg. Ltd.

The part numbers of standard parts generally start with AS, MS, NAS, M, etc., mainly O-rings, and the sizing is based on AS568. For example, MS29512 (AS901 – AS932), MS29513 (AS001 – AS475) series NBR70 O-rings, MS28774 (scarf cut), MS27595 and other series of pure PTFE gaskets. The groove design is based on MIL-G -5514, AS4716 and other standards.

Booth: A25



ABS battery pack

Sichuan CAMY New Energy Co., LTD

ABS battery pack, Series first parallel afterwards control each cell safety. Quickly isolate and inhibit the spread of faults. Safety fire suppressant. Fire suppressant long-term oxygen barrier, insulation, environmental protection and non-corrosive.

Booth: B06B



ULD Container Doors

Shenzhen Ansla Technology Co., Ltd.

ULD Container Doors

Booth: D19A



Aviation Signal Light Gun / STM.620.SLG.01

SISTEMATİK

Aviation Signal Light Gun

Booth: D19



Aviation Underground Pit System

SIYUANS AVIATION

Our company can provide variety PIT for all kinds of aircraft, such as: power supply pit, air-conditioning pit, drinking water pit, sewage pit, ventilation pit and other customized pit, which can provide all kinds of services for the airport conveniently and safely, greatly improve the operation efficiency of the airport, reduce the operation and maintenance cost.

Booth: B29

MAINTENANCE PLATFORMS

SOVAM

The SOVAM PA is a self-propelled vehicle designed for maintenance operations on aircrafts. Its unrivaled stability enables the platform to operate at an upper position with winds up to 80kph (50 mph)

Booth: F17

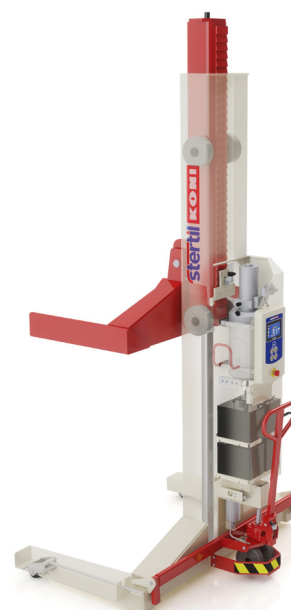


Stertil-Koni ST 1130

Stertil-Koni

Stertil-Koni offers various models mobile column vehicle lifts that can be used for inspection, maintenance and repair of your entire fleet of Ground Support Equipment. Offering total ease of operation and can be moved around the workshop and even outside. The ST 1130 mobile column vehicle lift is designed to lift tyres with very large diametres: 2,000 mm - 2,200 mm. The extra long (650 mm) pick-up forks also have the advantage of being detachable. The ST 1130 has a lifting capacity of 13,000 kg per mobile column. Ideal for very heavy and bulky shaped GSE vehicles and equipment.

Booth: F38



OTS[®] basics

OTS basics

STI Security Training International GmbH

OTS basics lays the foundation for the later deployment of the learners in the evaluation of X-ray images. In addition to becoming familiar with the functions of X-ray equipment, the essential theoretical principles are also covered and the necessary knowledge acquired. The ability to recognise different everyday objects by their material composition and outlines forms the basis for the in-depth modules that build on it.

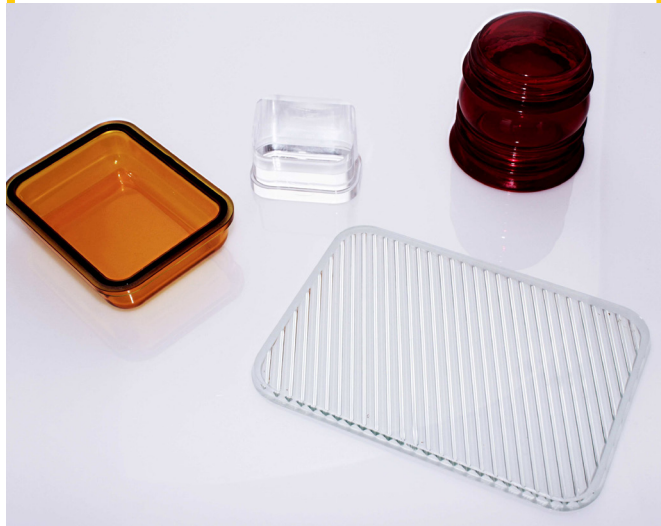
Booth: E29C

Domes, Prisms, Lenses

Stumpe Glas GmbH

Glass components for airfield lighting

Booth: E29B



CERA-DUCT GLOBAL

Sugie Seito Co., Ltd.

The underground duct system "CERA-DUCT GLOBAL" is a ceramic duct to protect important cables that is buried underground. Not only at apron or GSE passage way, it also has been installed under runways where the aircrafts load is applied. It does not change over time. It can be used for a long period and has an excellent life-cycle cost. In addition, It also shortens the construction period and reduces construction costs. Moreover, compared to other conventional pipe, it is an environmentally friendly product that can reduce CO2 emissions up to 70% and suitable for ECO airport construction.

Booth: B23



Group support equipment and services

TCR Group

TCR is a pioneer and world leader, specialized in Ground Support Equipment (GSE) all around the world. TCR offers an exhaustive range of solutions and services to support air industry customers with the vital aspect of their ground handling processes: the use and operation of all their GSE equipment.

Booth: D40





PR400

TDA LEFEBURE

400 Hz CONNECTORS

Booth: C10



GSE Parts and Accessories

Sage Parts Asia Ltd.

GSE Parts and Accessories

Booth: G36



AT5800 AMBULANCE TRUCK

TIMSAN

We provide Self propelled and electric driven versions beside truck mounted and minimum & maximum service heights based on customer's aircraft range.

Booth: A07

**REGISTER FOR YOUR FREE
VISITOR PASS TODAY**

<https://www.interairport-southeastasia.com>

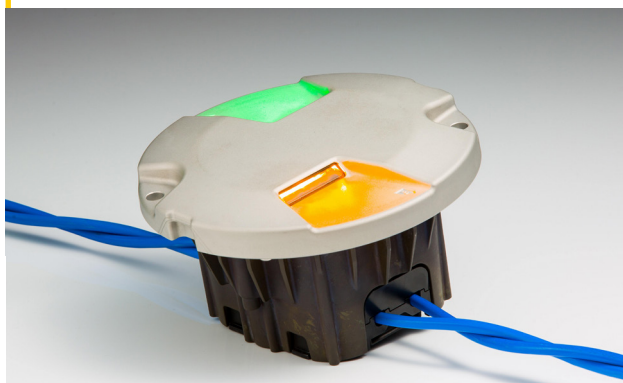


CEDD Airfield Ground Lighting

TKH Airport Solutions

A revolutionary contactless energy and communication technology. Energy and data transport are combined in a single cable. Airfield lights receive their power and data by means of induction and can therefore easily and safely be installed or replaced without making electrical contact. With up to 40% lower energy consumption compared to regular 6.6A LED AGL systems, CEDD enables airfields to reduce their impact on environment.

Booth: G20





TXL-838-reGen

TLD ASIA

The TXL-838-reGen is an electrical battery-powered self-propelled, dual-platform loader designed to transfer containers and pallets weighing up to 7 600kg. To service all commercial aircrafts' requirements.

Booth: C20



Leading-Brand Comparable Meters

Total Control Systems

TCS has re-configured its high flow, highly accurate TCS 700 3", 4" and 6" meters' connections to be a flange-to-flange drop-in replacement for single, dual, and triple capsule flow meters. In situations where higher flow rates and/or higher levels of accuracy are desired, the TCS 700 rotary meter is often the superior choice.

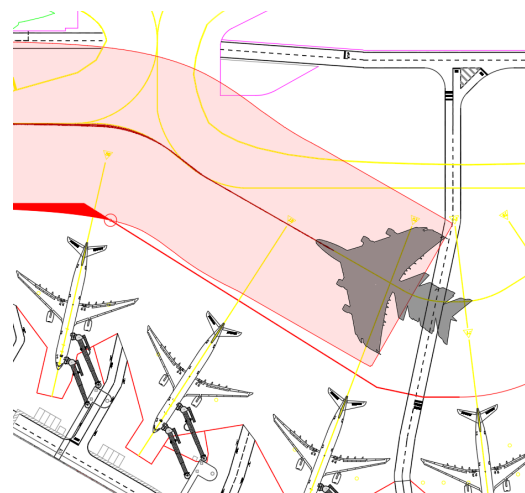
Booth: B18

Traffic-lines duo twister

traffic-lines GmbH

The principle of the traffic-lines duo twister® is based on two suction hoods with the annular gap suction system mounted on a rotating carrier. A working width of up to 4.20 m is achieved by the rotational movement of the two hoods. In terms of efficiency and area performance, the traffic-lines duo twister® is in a league of its own. In order to be able to compensate for unevenness in the surface, the traffic-lines duo twister® features electric height adjustment. Damage to markings, landing lights and their numbering is thus avoided.

Booth: D28E



AviPLAN

Transoft Solutions

AviPLAN, with renowned market-leading technology at its core, delivers a unique feature-set tailored to meet the specific challenges faced by today's airside planning, design and operations professionals. Analyze aircraft and support vehicle movements on airport aprons and taxiways, plan complex docking scenarios with multiple passenger boarding bridge lead-in-line airplane combinations, assess jet blast impacts and safety clearances, simulate complex pushback maneuvers and more.

Booth: A39



Vacuum Mower C30W hi-volume

TRILO Smart Industries

Vacuum mower for Wide-Area Cut And Collect On Airports; specially developed for heavy-duty airport mowing.

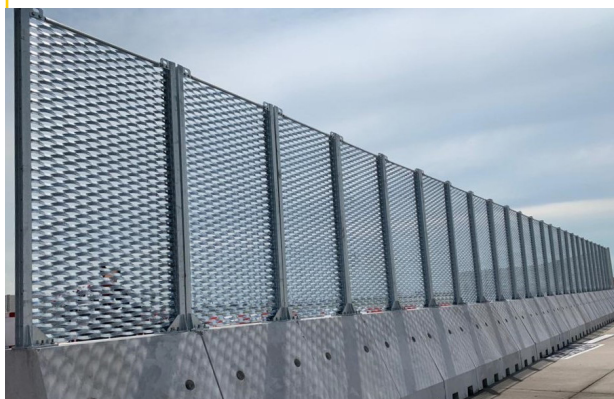
Booth: F41

Movable Jet Blast Fence

VALIS Engineering

VALIS Engineering's OPO Jet Blast Fence model is designed for temporary applications, like construction site on the air side, operational re-organizations and temporary aprons. The Jet Blast Fence is designed for several heights and jet blast velocity requirements. The solution is optimized for a low footprint and low weight. This allows the JBF to be moved easily with a forklift or readily available construction machines.

Booth: A31



e-VTS

Vestergaard Company A/S

Vestergaard Company has launched the e-VTS – our well-known vacuum toilet service unit – in a sustainable version on a fully electric 9 t chassis. The first version is equipped with a 40 kwh lithium-ion battery with enough capacity to drive up to approximately 50 km and operate for approximately 12 hours.

Booth: D43



ARFF series LION 6x6 and 4x4, Volkan Fire Fighting Vehicles

The LION Class ARFF vehicles are designed for the requirements of civil airports and air forces in large stations. The vehicles are produced on different chassis with 4x4, 6x6, 8x8 axle configuration.

Booth: A41





Aircraft Tow Tractor

Wei Hai Guangtai Airport Equipment Co., Ltd.

They are used to push and pull operations on various aircraft. The front driving station is hydraulically elevating and is ergonomically designed for operator comfort, visibility and safety. There is a fixed rear one-man cabin with full controls.

Booth: F02



EHA-L-ALS1

YOUYANG AIRPORT LIGHTING EQUIPMENT INC.

LED Approach Light - Elevated type

Booth: B07

PMS-4

Zel-Aaren Innovation

The Pur Moulding System, PMS-4, is a cold applied two-component polyurethane system of solid type suitable for the fixing of items in asphalt and concrete surfaces. With airfields being the largest customer base today, PMS-4 is also suitable for roads and bridges. PMS-4 is manufactured in Sweden and used at airports in more than 20 countries all over the world.

Booth: B31



TB25

ZHEJIANG GOODSENSE FORKLIFT CO., LTD

2.5 Ton electric electric towing tractor

Booth: B21





High Intensity Approach Lighting

Avionics Airfield Lighting Pty Ltd

High Intensity Approach Lighting installation specialists

Booth: D21

REGISTER FOR YOUR FREE VISITOR PASS TODAY

<https://www.interairport-southeastasia.com>



FOX-4E Electric Tractor (Lead Acid)

BLISS-FOX BY PANUS

The FOX-4E is the electric version of the FOX-4E with lead acid batteries. Like the diesel version the Fox-4E is available as a standard 3.5 to 4.0 Tonnes with options for full cabin, air conditioning and hydraulically actuated tow hitch.

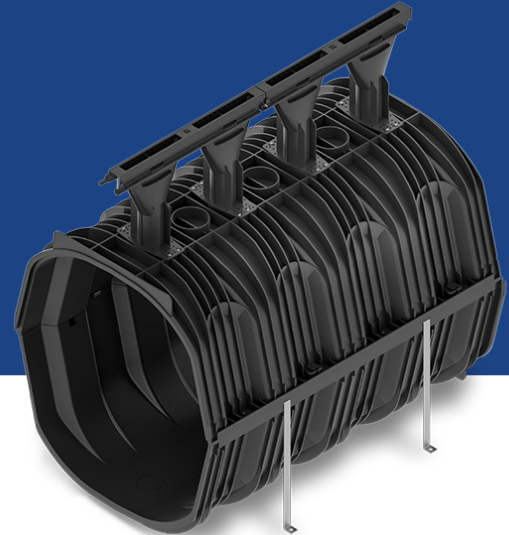
Booth: D07

RECYFIX HICAP F

Hauraton Singapore PTE. LTD.

RECYFIX HIGH Capacity drainage for highest loads

Booth: E19B



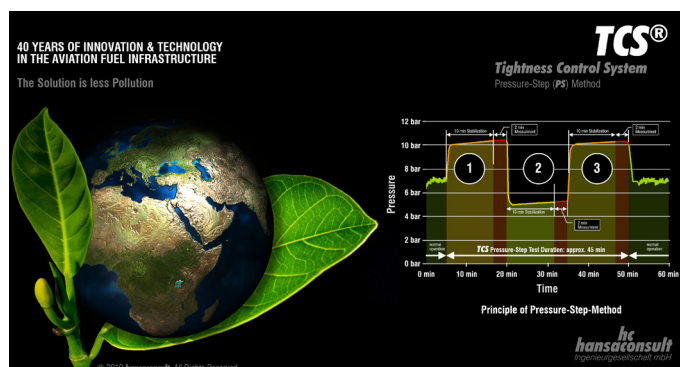
FaceVACS-Entry

Cognitec System

Cognitec introduces the next version of its FaceVACS-Entry product, a slim, light-weight device suitable for installations in eGates and kiosks. The technology takes standards-compliant biometric photos, and compares the images to digital facial images retrieved from ID documents or databases. Instant camera positioning, active lighting and responsive user guidance lead to optimal capturing conditions, accurate verification results and fast processing times.

Booth: D27D





Tightness Control System - TCS®

hansaconsult Ingenieuresellschaft mbH

TCS® Tightness Control System was developed in 1982, especially for operation at Frankfurt Airport and is now proven at many airports worldwide.

Booth: E19A



Delastic Preformed Pavement (Compression) Seals

D.S. Brown

Preformed engineered rubber profile compressed into expansion joint. Longest lasting concrete pavement joint solution. From .153 to 2.55 inches of movement. Used with 1516 Lube Adhesive. Installation tools available with purchase of seals. Polychloroprene extrusions meet ASTM D2628, FAA P-604, UFGS 32-13-73, & CRD C548. Specified by the FHWA, FAA, U.S. Army Corps of Engineers, U.S. Air Force; most U.S. International Airports; and most major pavement consulting engineers.

Booth: D20A

HOFMANN Road Marking Machine H33

HOFMANN GmbH

H33 in Manama/Bahrain with 1-component cold paint Airless system, 1 x 460 l and 2 x 220 l pressurised container with 90 cm wide line marker unit incl. 4 paint and glass bead guns each as well as 3 paint and glass bead guns for taxiways in black/yellow/black.

Booth: AA02



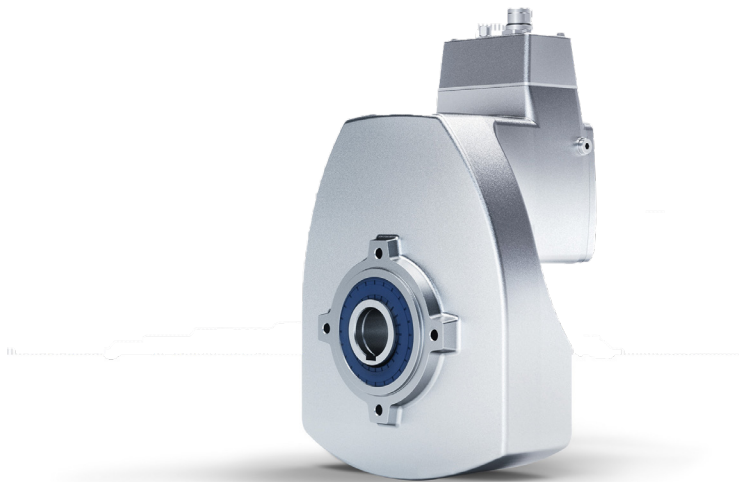
Honeywell Airfield Ground Lighting Solutions

Honeywell

Airfield Ground Lighting plays a crucial role in airport operations and is subject to comprehensive safety and compliance regulations by global aviation standards and regulatory bodies. AGL represents the entire set of ground installed luminaires and related ancillaries, that help aircraft land and find their way to the stand – helping enable uptime in all-weather conditions.

Booth: B01





TWO BECOME ONE: Gear unit and motor in one: the new DuoDrive

NORD DRIVESYSTEMS - Getriebebau NORD GmbH & Co. KG

With the IE5+ synchronous motor, NORD DRIVESYSTEMS is setting new standards with regard to energy efficiency of drive systems in the food industry and intralogistics. NORD has now integrated this high-efficiency IE5+ motor in a single-stage helical gear unit and thus optimised system efficiency. Compact installation space, high power density and very low noise emissions are only some advantages for users in the intralogistics sector or in food and pharmaceutical industries.

Booth: E20B



Airport Runway Cleaner ARC3000®

Smets Technology GmbH

The runway rubber removal system ARC3000® consists of a tractor with semi-trailer. Highly frequented airports have the problem that they only have very short cleaning time windows for cleaning and therefore need larger machines with higher capacities to remove the rubber on the runways quickly, efficiently and thoroughly. The ARC3000®, with the largest tank capacity of any system available in the world, was originally designed and built for a huge airport in the UAE.

Booth: E30B



SARA - Environmental Monitoring System

Softech

Scalable, modular and with an intuitive graphical interface, SARA is the suite of products for environmental monitoring and analysis/ SARA's suite is the set of products for the environmental monitoring and analysis in the airport and urban areas. SARA collects noise and air quality data from monitoring control units, correlates with radar tracks in the airport and reports results according to current regulations.

Booth: ITALY PAVILION

Series Isolating Transformer L-823

Bildal Electricals Pvt Ltd

Core: Toroidal Shape of high-grade, grain-oriented silicon steel for long, stable life.

Encapsulant: TPR rubber (also known as TPV, TPE) Much higher dielectric strength and lower water absorption than older materials, such as epoxy, neoprene or polychloroprene, Minimal, swelling in the presence of hydrocarbons, unlike neoprene, polychloroprene, etc.

Encapsulation Process: Injection molding for maximum consistency

Booth: F42



Power unit FCA-90HC (aerobridge)

TET Estel AS

FCA-90-12HC is intended to supply of airplane's on-board power system by 3-phase alternating current with 400 Hz frequency and 115/200 VAC voltage during preflight preparation and technical maintenance.

Consists of static frequency converter FCA-90-12H and automated cable winding device ACW-02. Each device is functionally complete and can be joined with each other. Can be manufactured in both standard complete set and also by Client's special requirements and adjustments.

Booth: F46



Model 316-33474 Stop Bar Control Sensor

Southwest Microwave

Southwest Microwave's Model 316-33474 Stop Bar Control Sensor can be combined with traditional aircraft stop bar safety systems to enhance reliable, effective detection of aircraft or vehicle movement between taxi-way and active runway.

Booth: C04

MALMS Mobile - Measuring AGL performance

MALMS / Tailor Made Systems Ltd

MALMS Mobile Photometric Test System measures airfield lighting performance against the criteria for beam intensity and orientation defined in ICAO Annex 14. It is therefore suitable to confirm compliance with National and International Standards. Mobile also provides information to identify problems, develop maintenance strategies and produce work schedules and maintenance reports. MALMS Mobile Photometric Test System is widely recognised as the best photometric measurement system available.

Booth: AA05





400Hz e-GPU

Dabico Airport Solutions

Dabico 400 Hz eGPU is a battery powered 400 Hz / 90kva converter used to power parked aircrafts

Booth: D46



AFGUARD®

ACTEUS FUELLING PTE LTD

Electronic sensor for the detection of free water in aviation fuels. The AFGUARD® sensor is qualified for use as an alternative to Chemical Water Detectors (CWD).

EI 1598 2nd Edition

Accepted by Joint Inspection Group (JIG)

Recommended by IATA Fuel Quality Pool (IFQP)

PerformanceBasedFilterLife™

Booth: F13

LOGIPIX

Ace Solutions 87 Co.,Ltd.

Airport Monitoring Solutions

Booth: C27

LOGIPIX



Power Traction 3.0 - Colibri Lithium Battery

Colibri Energy GmbH

A game changer for airports and warehouses. The Power Traction 3.0 is Colibri's newest and most advanced battery system for GSE and material handling equipment. Our system is available in 48V and 80V starting at 200Ah, with capacities up to 1000Ah. Colibri's batteries are compatible with all GSE and warehouse-applications. We ensure optimal battery performance in the toughest environments and guarantee it by our warranty. Each battery is equipped with a telematic-system to deliver real-time data insights to maximize operational efficiency and asset management.

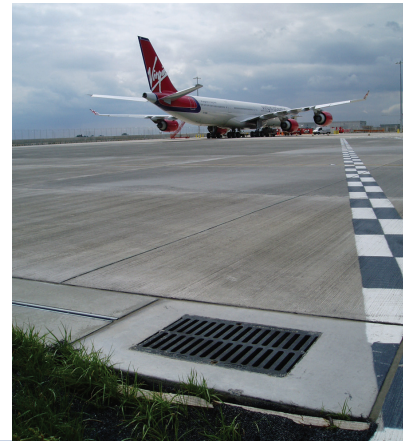
Booth: D27A

Goldhofer Sherpa D7

CW Aero Services Pte Ltd

the »SHERPA« family has been designed as a modular product line for the efficient use of identical parts, independent of the type of drive, fitted with tested components as well as significantly reduced spare parts inventory costs.

Booth: B02



Gatic drainage gratings

FINESCO ENGINEERING PTE LTD

GATIC drainage gratings

Booth: B03

Battery Driven GPU APA-ECO Series

ElectroAir

The Battery driven green GPU APA-ECO series is designed to eliminate CO₂ emissions with its unique technical characteristics. It can perform the complete service of aircraft at remote parking places with battery power, as well as the use of it indoors with zero emissions. This unit is also capable to operate from the 50/60 Hz, 400 V, 3 phase main power supply grid as any electrical GPU, without fuel consumption and with zero operating emissions.

Booth: B12



R-System Gen3

ewo Gmbh

When illuminating large areas, key factors are performance, durability, and efficiency. The objective of illumination is to ensure precision, homogeneity, and 0% light pollution. R-system Gen3 with its modular design and superior optical performance is the answer that more than 200 airports around the world made to light their aprons. Safety is a crucial issue in air traffic, and lighting is of paramount importance. Lighting on the apron enhances safety when important standards are met and when it is durable and reliable. Our R-System will do this - no compromises

Booth: Italy Pavilion

**REGISTER FOR YOUR FREE
VISITOR PASS TODAY**

<https://www.interairport-southeastasia.com>



GATE Innovation Program

GATE

GATE's Innovation Program supports all members in developing, and, above all, testing resource saving solutions for processes in the airport and on the apron. To achieve this, GATE relies on partnerships with several airports and institutions so that testing and validation are undertaken in real-world conditions.

Booth: German Pavilion



»PHOENIX« Series

Goldhofer

The »PHOENIX« AST-2P and AST-2X towbarless tractors feature a compact and modular vehicle concept. The hydrostatically powered steering drive axle provides maximum traction even under low loads and a wide range of aircraft up to 352t MTOW. The »PHOENIX« E turns the best-selling towbarless aircraft tractor into a future-oriented, zero-emission forefield vehicle.

Booth: B02



INFRASTRUCTURE DEVELOPMENT

GROUPE ADP (Groupe ADP Airport Services)

Spanning from the early stage of feasibility studies to the completion of construction, our expertise in Airport Architecture & Design, Program, project & Construction management allows you to develop smart infrastructures and contribute to the Airport industry's sustainable growth. We accompany the client in particular on strategic airport planning and technical consultancy, airport engineering and project management and strategic consulting, engineering and operations for advanced air mobility.

Booth: E15

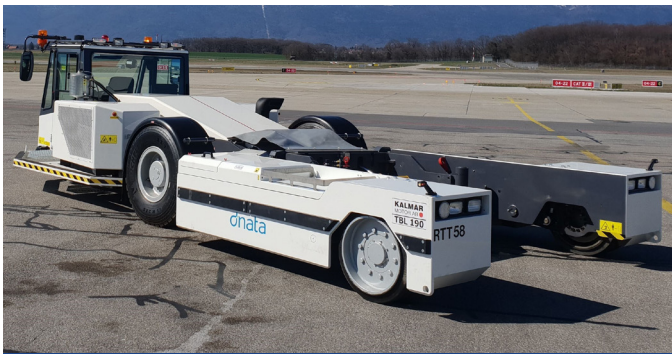
MOBILE 400 Hz BATTERY GROUND POWER UNIT

GUINAULT SA

The GUINAULT battery GPU is based on the GUINAULT ultra-sturdy diesel GPU technology, GUINAULT solid-state converter, and third party lithium ion high capacity battery. This ultra-sturdy design is fully protected against corrosion and is engineered to withstand harsh conditions in airport environments.

Booth: B02





TBL 190

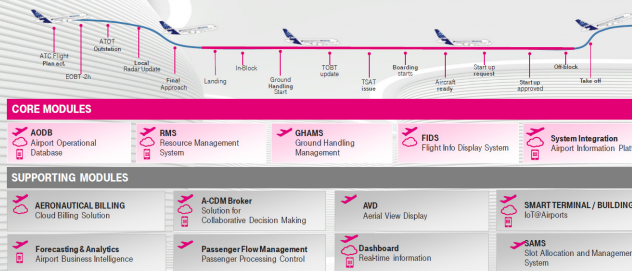
Kalmar Motor

The TBL- 190 is a very powerful tractor designed both for pushback operations of aircrafts of over 300 tonnes take-off weight as well as high speed maintenance towing.

Booth: D43

T-SYSTEMS TOTAL AIRPORT MANAGEMENT SOLUTIONS

OPERATION FROM TMO TO TAKEOFF AND BEYOND



AODB / RMS / FIDS, Airport CDM and Information Broker

T-Systems International GmbH

The Airport Business Unit of T-Systems is supporting the Aviation and Airport Industry in the Digitalization of its operations. since more than 30 years .

Our Airport Management Solutions are focusing on a modular management system platform consisting of an AODB, RMS and FIDS, Ground Handling Management System (GHAMS) and an Information Broker which is connecting the internal and external interfaces of the airport

Airport CDM plays a major role in the airport industry and T-Systems provides A-CDM process consultancy and A-CDM implementation based on EUROCONTROL Standards

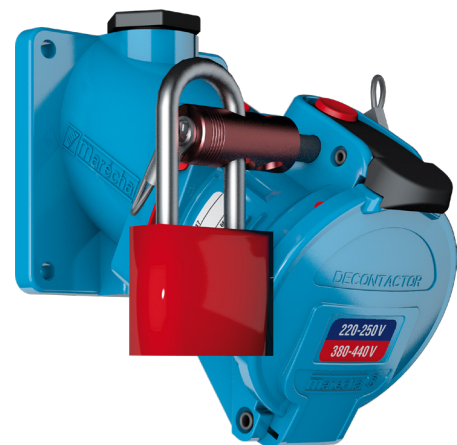
Booth: D27B

DECONTACTOR™ with spring-loaded contacts

MARECHAL ELECTRIC Asia

A unique device that combines the advantages of a power socket with the performance of a switch. The integrated switch allows for disconnection under load up to 250 A or 110kW, meaning maintenance tasks can be undertaken faster, reducing downtime.

Booth: B02

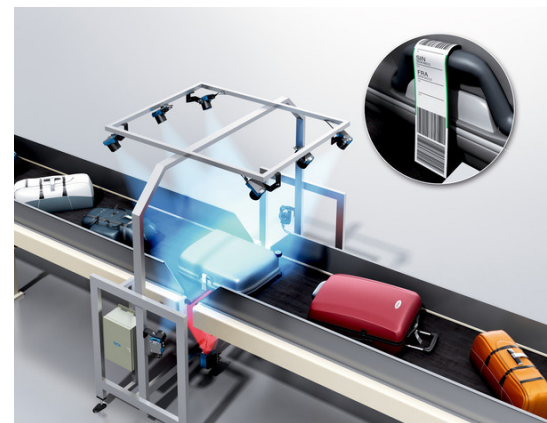


ALIS - Airport Luggage Identification System

SICK AG

ALIS (Airport Luggage Identification System) track and trace system for automatic reading of IATA luggage tags in baggage handling systems. Designed as a hybrid solution, the track and trace system is a prime example of three types of technologies – laser scanners, cameras and RFID – working in perfect harmony for reliable identification and decoding the IATA bag tag.

Booth: D28C



EL series multi-functional elevated lights

Airsafe Airport Equipment Co., Ltd.

Self-cleaning glass dome is adopted for light fixture to avoid adhesion of dust and organic substances and ensure luminous efficiency

Booth: A01



Aviramp Lite/Domestic

Aviramp

The Aviramp Lite is the smallest and most compact mobile boarding ramp available, replacing stairs for the safe boarding and deplaning of passengers and PRMs. This model services Dash and ATR aircraft types and is available in manual, diesel and solar power. The Aviramp Domestic is a compact boarding ramp for use on narrow bodied aircraft such as the Q200 through to the BAe146. Both solar and diesel versions are available.

Booth: AA01

**REGISTER FOR YOUR FREE
VISITOR PASS TODAY**

<https://www.interairport-southeastasia.com>



Catering, Cleaning PRM Highloader

DOLL Airport Equipment GmbH

A strong lifting system gently raises the box upwards. The numerous safety features guarantee absolute stability. Intelligent sensor technology ensures the docking and transfer processes to run smoothly. There's a reason that DOLL's highloaders are among the best across the world.

Booth: D28D

Luggage tractor (Electric)

Hubei Donghan Airport Equipment Technology Co., Ltd

Strong power, eye-catching appearance, endurance and traction ability lead the industry. TMS battery water cooling and heat management system is configured to keep the battery constant temperature for a long time, ensure the output capacity of the battery, and extend the service life of the battery.

Booth: B04

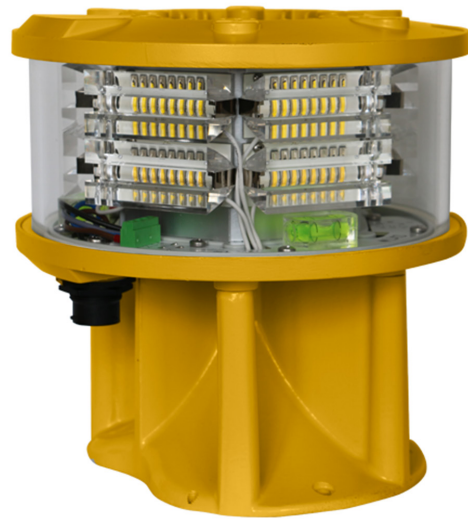


LUXSOLAR ADB-LXS light_ aeronautical beacon, aerodrome beacon

LUXSOLAR

LUXSOLAR ADB-LXS light has been designed to be an important support to airfield operations, providing guidance during night operations to pilots and allowing them easily identify the airstrip. Thanks to reduced dimensions, ADB-LXS can be easily installed on horizontal surfaces and a balance of customized lenses, electronics and mechanical components make this device the most reliable and high-quality LED Aerodrome Beacon available on the market.

Booth: Italy Pavilion



PASSENGER STAIRS

TIPS GSE

Tips' passengers stairs are designed with practicality and savings in mind. The wide range of passenger stairs can service all types of aircraft. The modular concept of the stairs with a wide variety of options enables the product to be configured according to the customer's requirements.

<https://www.tips-gse.com/gse-products.html?action=category&url=passenger-stairs.html>

Booth: G16



IoT Augmented Airfield Service System (AS2)

ubiZense Limited

AS2 is an airfield service system and is currently in its first phase which focuses on monitoring and improving the efficiency of baggage delivery from arrival flights. Through a deep-minded map service compatible with ArcGIS and Google map, it actively delivers a view of the overall real-time situation on the apron to those using it, such as apron service operators, airlines and other airfield service teams. From this, their work can be coordinated so that the key performance indicator targets are reached and the performance of baggage delivery is improved.

Booth: AA03

PRODUCT PRESENTATIONS

This **#IASEA**, join leading companies as they deliver innovative sessions, case studies, and product briefings that invokes fresh thinking and reveals new ideas for future technologies and business approaches.

Attendees should consider these sessions to bring out the very best in knowledge sharing at a granular level. This is where peer-to-peer learning is at its best.

WEDNESDAY, 1 MARCH



11AM - 11.30AM

INTELLIGENT POWER MANAGEMENT

STEVEN NG
SALES DIRECTOR ASIA PACIFIC
ITW GSE



11.45AM - 12.15PM

GROUPE ADP AIRPORT SERVICES

ADRIAN MORALES
DEPUTY COMMERCIAL MANAGER
GROUPE ADP



2PM - 2.30PM

AIRCRAFT MAINTENANCE PLATFORMS

JOHN GONCALVES FERNANDES
COMMERCIAL DIRECTOR
SOVAM



2.45PM - 3.15PM

FLEET MANAGEMENT AND OPTIMIZATION

BJÖRN ZEPPENFELD
EMEA BUSINESS DEVELOPMENT MANAGER
ADVEEZ



3.30PM - 4PM

COLLISION AVOIDANCE SOLUTION FOR GSE

BENNY LIM
SALES MANAGER
IFM ELECTRONIC PTE LTD

THURSDAY, 2 MARCH



11AM - 11.30AM

PLANNING FOR A SUSTAINABLE FUTURE WITH SOFTWARE FROM TRANSOFT SOLUTIONS

MARK RODRIGUES
DIRECTOR, BUSINESS DEVELOPMENT - AVIATION
TRANSOFT SOLUTIONS



11.45AM - 12.15PM

EARTH FAULT SEARCH SYSTEM FOR AGL

CIRCUITS BY GRP
THIEN VU DO
COUNTRY MANAGER
GRP



2PM - 2.30PM

SPX ATON BRAND/COMPANY OVERVIEW, SELF-CONTAINED SOLAR LIGHTING INSTALLATION PROJECT HIGHLIGHTS

CORY BRIGHAM
BUSINESS DEVELOPMENT MANAGER, AIRFIELD LIGHTING
AVLITE SYSTEMS & FLASH TECHNOLOGY (SPX AtoN)



2.45PM - 3.15PM

LIGHTING THE WAY TO A GREEN, SMART AND SAFE AIRFIELD

EU GENE TAN
REGIONAL SALES MANAGER
TKH AIRPORT SOLUTIONS



3.30PM - 4PM

TELEMATICS

MATTHEW HUMPHREY
VICE PRESIDENT AUSTRALIA & SOUTH EAST ASIA
GEMONE



4.15PM - 4.45PM

YOUR FUTURE GSE FLEET-ECOLOGY, CONSERVATION, OPTIMIZATION

GENNA LIU
PUBLIC RELATIONS MANAGER
WEIHAI GUANGTAI AIRPORT EQUIPMENT CO., LTD.

LEVIN JIANG
CHIEF ENGINEER
CONTEMPORARY AMPEREX TECHNOLOGY CO., LIMITED

*subject to change